

PRODUCT INFORMATION PACKET

Model No: 5KH39QN9642T

Catalog No: H133

1/2-1/6 HP 2 speed Fan and Blower HVAC/R Motor, 1 phase, 1800/1800 RPM, 230 V, 56 Frame, ODP
Self Cooled Motors





Nameplate Specifications

Output HP	1/2-1/6 Hp	Output KW	0.37 kW
Frequency	60 Hz	Voltage	230 V
Current	4.1,2.4 A	Speed	1725/1140 rpm
Service Factor	1	Phase	1
Efficiency	55 %	Power Factor	0
Duty	Continuous	Insulation Class	B
KVA Code	L	Frame	56
Enclosure	Drip Proof	Thermal Protection	AUTO
Ambient Temperature	40 °C	Drive End Bearing Size	6203
Opp Drive End Bearing Size	6203	UL	Recognized
CSA	Yes	CE	N

Technical Specifications

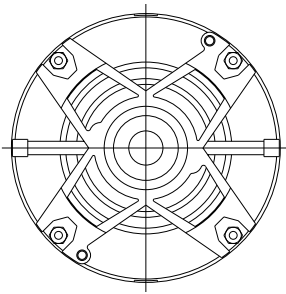
Electrical Type	Split Phase	Starting Method	SM
Poles	4	Rotation	Counterclockwise/Clockwise
Mounting	Resilient Base	Motor Orientation	ANY
Drive End Bearing	BALL	Opp Drive End Bearing	Ball
Frame Material	Rolled Steel	Overall Length	10.32 in
Frame Length	6.22 in	Shaft Diameter	0.630 in
Shaft Extension	1.88 in	Thru-bolts Extension	0 in
Outline Drawing	52A106982P1	Connection Drawing	52A105385AC

This is an uncontrolled document once printed or downloaded and is subject to change without notice. Date Created:03/11/2020

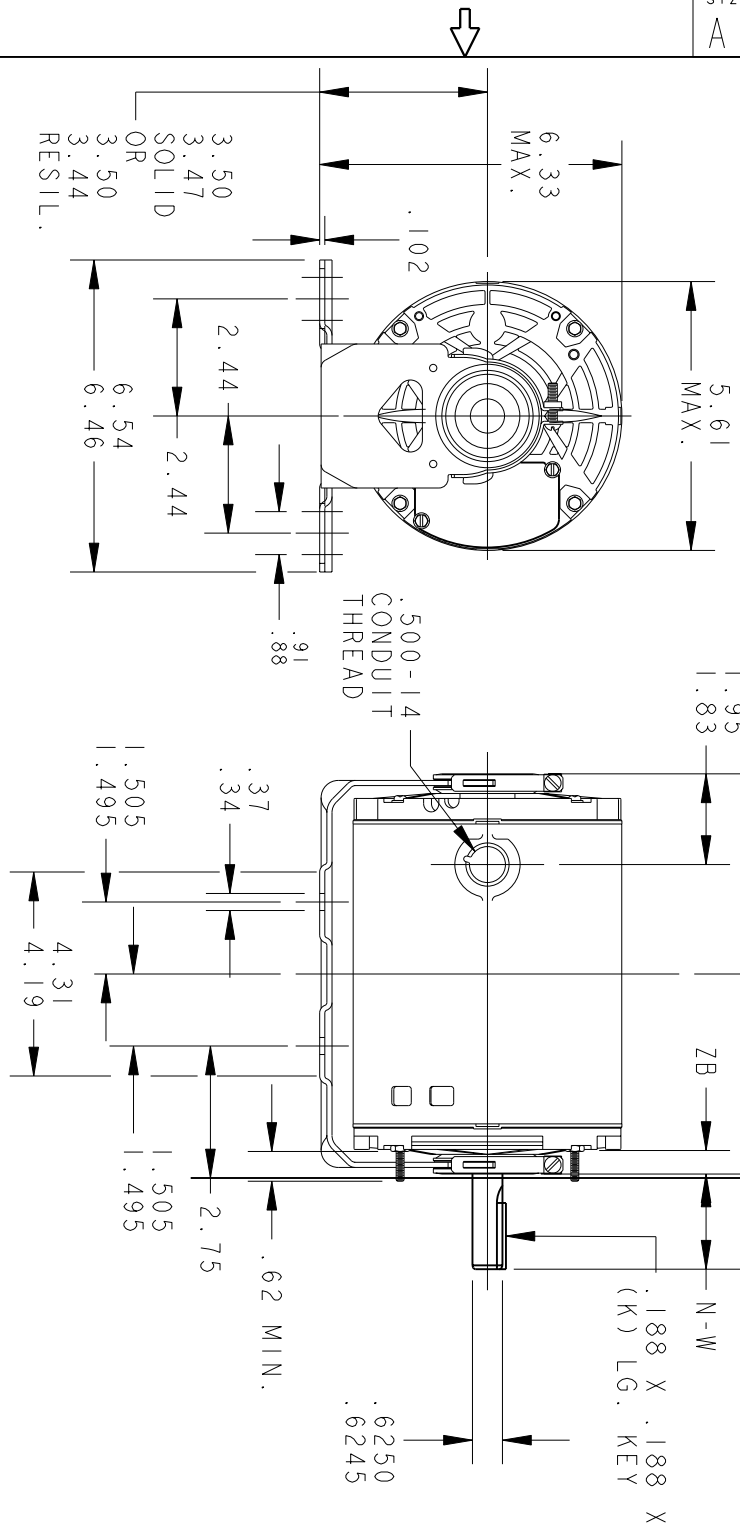
THIRD ANGLE PROJECTION



REVISIONS		DATE	APPROVED
REV. 1	DESCRIPTION REDRAWN WITHOUT CHANGE	04/28/92	BLJ
2	REDRAWN BY 2M SOFTWARE CO.	03/05/95	CCP
3	CHG TO RBC FORMAT PER IS05-1777	02/15/06	SUDHA



VIEW SHOWING
P.E. VENTILATION
OPENINGS



P	TYPE	GE SIZE	NEMA FR	C	K	L	N	N-W	ZB
1	KH	36	56	10.32	1.38	4.23	1.88	2.01/1.79	.69/.59

W * IS A CLEARANCE
DUE TO VARIATION
IN PARTS AND
ASSEMBLY.

SIGNATURES			DATE
MODEL	M.A.M.		10/09/89
DETAIL			
CHECKED			
ENGRG			
MFG			
QUALITY			
ISSUED	C.C.P.		03/05/95

REGAL-BELOTT CORPORATION

OUTLINE

**FORM N - GENERAL PURPOSE MOTOR - DRIP PROOF -
SOLID OR RESIL. BASE - BALL OR SLEEVE BEARING FWF: SKH390N963IT**

APPLIED PRACTICES DIMENSIONS ARE IN INCHES

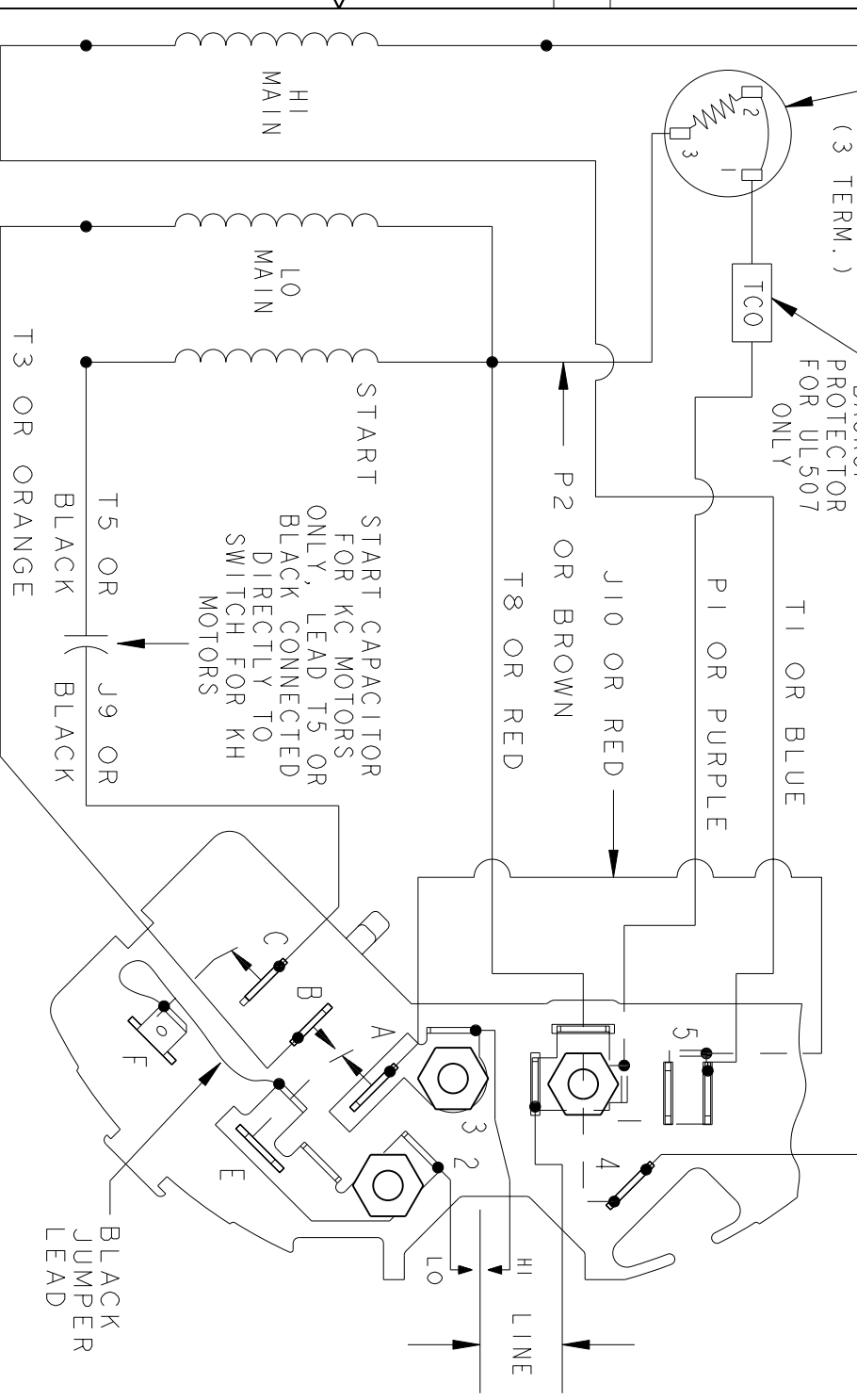
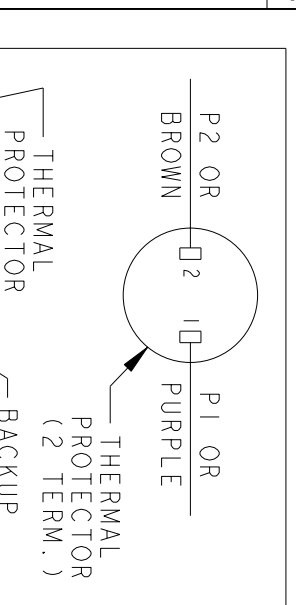
FOR ADDITIONAL INFO REFER TO:

SCALE: 0.250 REF. No: .

52A106982 REV 3

SHEET 1 of 1

REV.	DESCRIPTION	DATE	APPROVED
4	UPDATED FORMAT	12/19/05	MAM



NOTE #1 - TO REVERSE ROTATION INTERCHANGE BLUE (T1) AND WHITE (T2) LEADS.

NOTE #2 - WHEN MORE THAN ONE CAPACITOR IS USED CONNECT IN PARALLEL.

REF. DIAG. - 121A866

SWITCH (D) - 115D958BA
CONNECTION LABEL - 52X332052

SIGNATURES	DATE
MODEL M.D.PAPE	12/14/87
DETAIL	
CHECKED	
ENGRG	
MFG	
FOR ADDITIONAL INFO REFER TO:	
APPLIED PRACTICES	QUALITY
DIMENSIONS ARE IN INCHES	ISSUED
MATERIAL	M.D.P.
	07/29/94
	SOLID MODEL: 52A105385AC

REGAL-BELOIT CORPORATION

CONNECTION DIAGRAM

FMM: 5KH35KN14IGS

52A105385AC

SCALE: 1.000 REF. No.: .

SHEET 1 of 1